

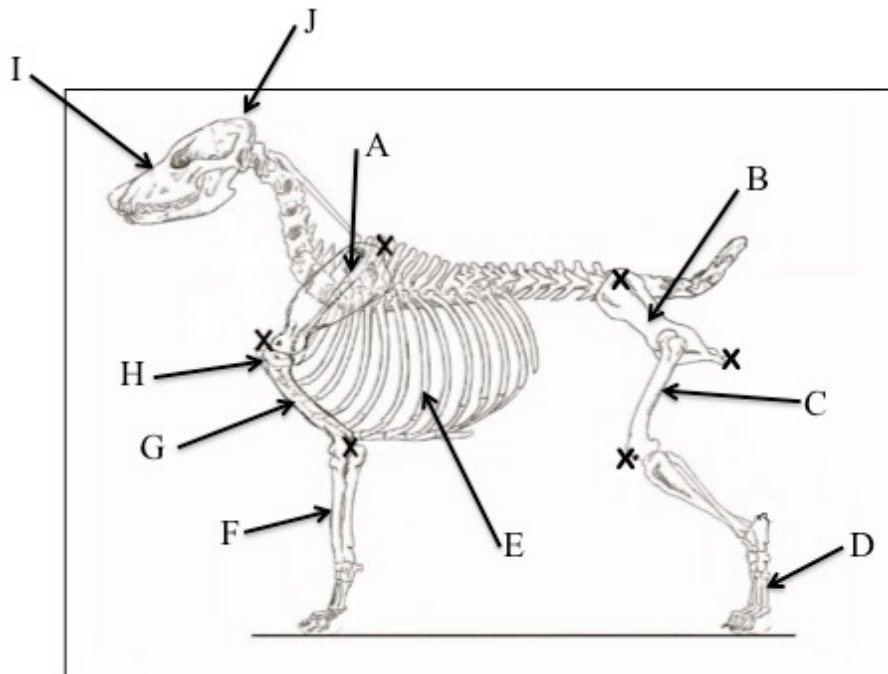


Miniature American Shepherd Club of the USA

Presenter's Open Book Exam Part 3 of 3 Skeletal Exam

(A) Place the letter of the corresponding area next to the number of the term that identifies it on the answer sheet.

- | | | | | |
|-------------------|---------------|----------------------|-----------|----------|
| 1. Occipital Bone | 2. Scapula | 3. Humerus | 4. Pelvis | 5. Femur |
| 6. Radius | 7. Metatarsus | 8. Point of Shoulder | 9. Skull | 10. Ribs |



The 3 X's in the front portion of the dog represent the withers, (top of shoulders), the notch in front tip of shoulder and the elbow.

(B) The distance between these 3 X's should be:

- A. Equal distance.
- B. Longer between the withers and notch in the shoulder.
- C. Longer between the notch in shoulder and the elbow.

The 3 X's in the rear portion of the dog represent the: point of buttocks, the knee and the top of hip.

(C) The distance between the 3 X's should be:

- A. Equal distance.
- B. Longer between top of the hip and buttocks.
- C. Longer between the buttocks and knee.